



evo fogg
ULV Cold Fogger



MODEL: SFXD-CD05A

INSTRUCTION MANUAL

Dear Customer,

Thank you for purchasing an EVO-FOGG.

The EVO-FOGG allows for a quick and simple, yet highly efficient disinfecting and cleaning process.

The unit can service an area up to 1000m² in approximately 10-minutes. With its centrifugal rotating and non-blocking sprayer and adjustable droplet size the machine is able to meet all kinds of sanitizing and disinfecting requirements. Please take the time to read the following safety and operating instructions before you begin using your unit. Following the instructions will ensure you receive the highest possible efficiency out of your unit and will extend the service life.

Please contact us for any maintenance and service needs, or for any further assistance.



CONTENTS

READ THE FOLLOWING BEFORE USE	2
MODEL NUMBER & TECHNICAL PARAMETERS	2
BASIC WORKING PRINCIPLES	2
EVO-FOGG SFXD-CD05A MODEL	2
TROUBLESHOOTING	3
PARTS LIST	4
WARRANTY SERVICE	5
DISCLAIMER	5

PLEASE READ THE FOLLOWING BEFORE USE

- 1 Before use, please check that the electrical supply is 220V/50Hz. Check that the air filter is not blocked in any way.
- 2 Do not overfill the solution tank beyond its maximum 5L capacity. If the tank overflows and the air filter cotton becomes wet, wait until it is dry before turning on the unit.
- 3 The motor speed has been set for ideal spray dispersion. Do not detach or change the motor rotation. In the case of close-up spraying, simply adjust the control valve slightly.
- 4 Only water-soluble liquids should be used in the unit. Make sure there are no impurities which may block the air filter.
- 5 The unit should be powered off in case of the following:
 - a. In the event of getting wet
 - b. The motor stops working
 - c. An obvious change in the sound of the motor
 - d. Solution leakage
 - e. The motor does not start
 - f. If you are unsure in any way that the unit is not working correctly and/or could put the operator at any risk.
- 6 We advise wearing a disposable protective suit, respiratory mask and eye protection while using the unit.
- 7 After use, rinse the solution tank with clean water and turn on to allow clean water to run through the unit and spray nozzle.
- 8 Store the unit in a safe and dry place away from exposure to direct sun and moisture. Store safely away from the reach of children.
- 9 Do not use the unit in the rain. Do not plug in the unit with wet hands.
- 10 Do not store the unit near flammable or explosive materials or in extremely high temperatures.
- 11 Avoid excessive pulling on the power cable.
- 12 Avoid turning the unit on and off too frequently to prevent potential damage to the motor.
- 13 In the case of damage to the unit, do not attempt to disassemble the unit. Do not damage or tamper with the power cord in any way.

MODEL NUMBER & TECHNICAL PARAMETERS

MODEL	VOLTAGE/FREQUENCY	POWER	TANK CAPACITY	SPRAY VOLUME	DROPLET SIZE	SPRAYING DISTANCE
SFXD-CD05A	AC220V/50HZ	1000W	5L	470ml/min	10-150 µm	6-8m

BASIC WORKING PRINCIPLES

The EVO-FOGG SFXD-CD05A is a ULV Cold Fogger using a high-power universal motor. The rotation of the fan blades generates high-speed rotating air. At the same time the motor increases the pressure of the solution forcing it to flow through the specially designed nozzle. The combination of high-speed air pressure and the uniquely designed nozzle allows for the creation of extremely small atomised liquid droplets.

EVO-FOGG SFXD-CD05A MODEL

- 1 Fill the tank with mixed cleaning solution then fasten the tank cap.
 - a. Take care not to submerge the check valve into the tank/solution (See Pic 1).
 - b. Take care not to overfill the tank as overflow may cause damage to the motor. The maximum capacity of the tank is 5L (see Pic 2).
- 2 Plug in and connect the power (See Pic 3). Kindly note, all units are fitted with a leakage protector.
 - a. Before use, press the test button to check that the unit powers down.
 - b. If the unit powers down press the reset button and begin use. If not investigate further and possibly replace cable.
- 3 Press the switch to turn the unit on (See Pic 4).
- 4 Adjust the spray particle size by rotating the adjusting knob on the spray head (See Pic 5).
- 5 After use, empty any residual solution. Refill the tank with clean water and run the unit at a high flow rate for about 30 seconds to prevent nozzle blockages or corrosion.
- 6 Turn off the power immediately after cleaning and store the machine in a safe place away from exposure to sun or wet conditions, and away from children.



Picture 1



Picture 2



Picture 3



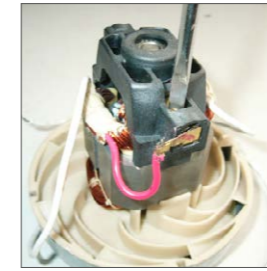
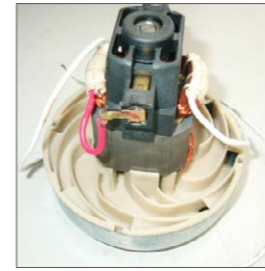
Picture 4



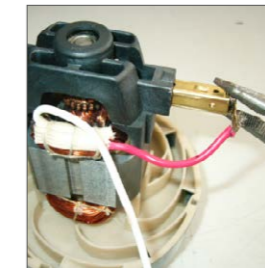
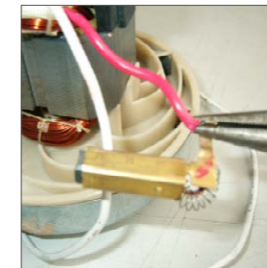
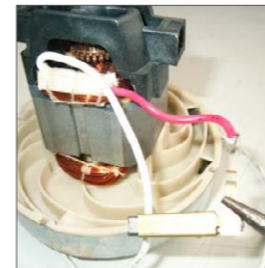
Picture 5

TROUBLESHOOTING

1. **Unit not running**
 - a. Loose plug/bad electrical contact – check power plug and connections.
 - b. Switch malfunction – check switch and replace if needed.
 - c. Carbon brush wear – change the carbon brush following the instructions below:
 - Remove the motor from the unit and make sure all the parts are complete and undamaged.
 - Press down on the spigot on the outer frame of the carbon brush using a flat screwdriver (refer to picture below).
 - Pull the carbon brush out of the seat using needle-nose pliers.



- Prepare the new carbon brush making sure all connections are sound.
- Fit the carbon brush into the seat on the motor and press firmly into place (refer to picture below)
- Place the motor back into its original position within the unit.



2. **Unit runs without spraying**
 - a. Flow rate valve or spray nozzle blockage – use a thin gauge piece of wire or high-pressure air to dislodge and remove any blockages.
 - b. Inlet or Outlet pipe not attached – reinstall/reattach pipe
 - c. Adjustable sprayer head is locked – rectify as per below pictures.



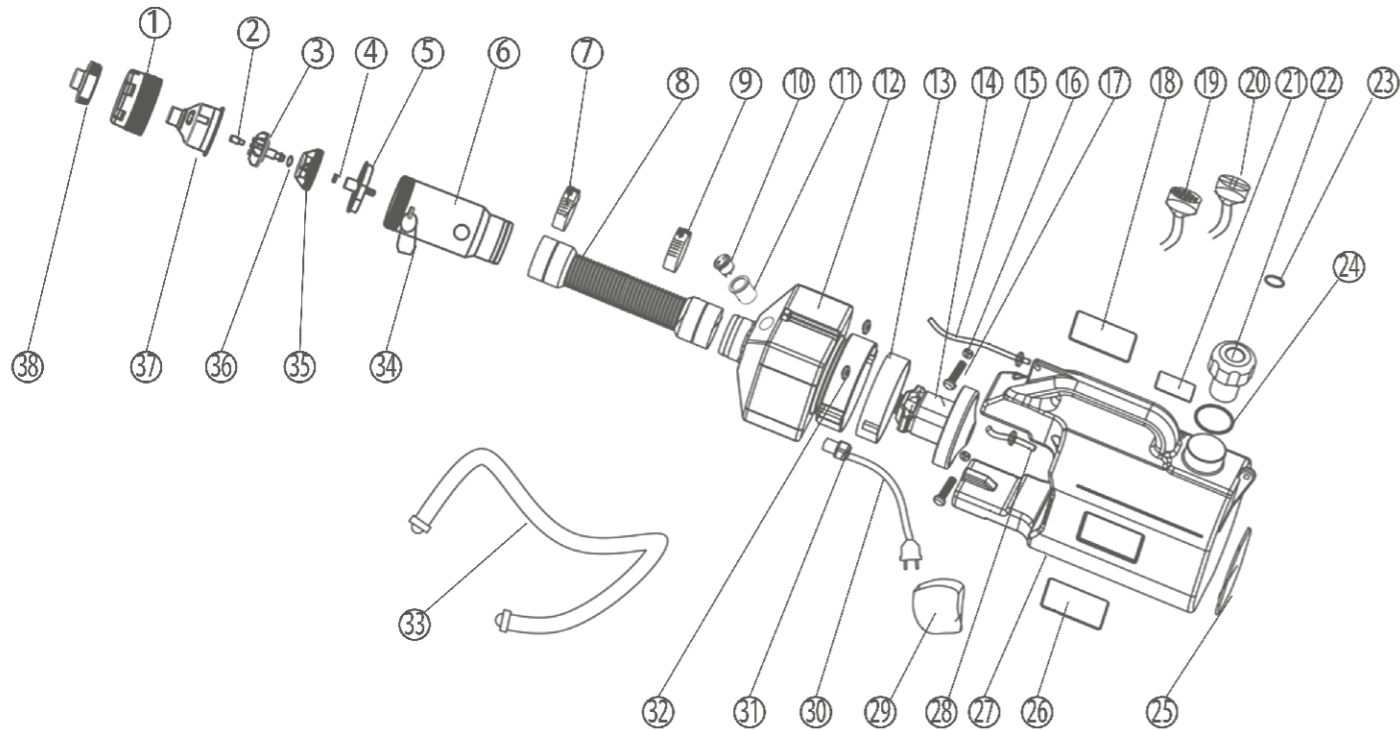
Correct Way



Wrong Way

3. **Interrupted spraying**
 - a. Inlet or outlet pipe is loose or broken – reinstall or replace pipe
4. **Unusual sound from the unit**
 - a. Air inlet blocked – Identify and remove any possible obstructions to the air inlet.

PARTS LIST



- | | |
|-----------------------------------|-----------------------------|
| 1 SPRAY HEAD CAP 2 | 20 CHECK VALVE |
| 2 Φ3 NOZZLE CORE | 21 WARNING |
| 3 NOZZLE | 22 CAP |
| 4 WASHER | 23 O-RING 7.1*1.8 |
| 5 SPRAY HEAD SUPPORT FRAME | 24 O-RING 47*3.5 |
| 6 SPRAY HEAD SHELL | 25 WARNING |
| 7 CLAMP 40-63 | 26 LOGO |
| 8 BELLOWS | 27 TANK |
| 9 CLAMP 40-63 | 28 INLET PIPE |
| 10 SWITCH | 29 SPONGE |
| 11 SHEATH | 30 CABLE |
| 12 MOTOR SHIELD | 31 PG-7 CONNECTOR |
| 13 SEAL RING | 32 RUBBER RING 7 |
| 14 MOTOR | 33 BELT |
| 15 OUTLET PIPE | 34 HOOKER |
| 16 M4 CAP NUT | 35 SPRAY HEAD HOLDER |
| 17 M4*18 SCREW | 36 Φ6*1.8 O-RING |
| 18 LABEL | 37 SPRAY HEAD CAP 1 |
| 19 FILTER | 38 DAMPER |

WARRANTY SERVICE

One year warranty on the main parts, excluding the O-ring (23 & 24) and sponge (29) which are covered for 3 months.

Please take note of the following exclusions regarding the warranty:

- Damage to metals parts, hose, and rubber pads due to the use of highly corrosive liquids.
- Damage or breakages due to the user altering parts or structures.
- Not following instructions as per the manual during operation or maintenance.
- Any damage caused by improper operation or excessive usage.
- Failure to change the carbon brush when the accumulative time of use exceeds 300 hours.



DISCLAIMER

Every care has been taken in the compilation of data contained in this manual and in verification of its accuracy when published, however the content of this manual is subject to change with ongoing product developments. This manual is published and distributed on the basis that EVO LIFE Pty Ltd is not responsible for any results or consequences of any actions taken by users on the basis of information contained in this manual, nor for any error in or omission from this manual. EVO LIFE Pty Ltd expressly disclaims all liability and responsibility to any person, whether a reader of this manual or not, in respect of claims, losses or damage or any other matter arising out of the use of this manual. Damage to the equipment or dysfunction of the equipment caused by misuse or improper operation of this device will void any warranty. Products sold by EVO LIFE Pty Ltd include equipment used for cleaning and disinfecting. Participation in this activity is associated with a high level of risk. Risks include, but are not limited to, serious physical injury, disability and/or death. You participate in this activity at your own risk. Assumption of Risk By buying, using, or allowing the use of EVO LIFE products, you understand and agree that cleaning and disinfecting can be high risk activities and, to the extent permitted by law, You expressly and voluntarily assume the risk of death or other personal injury sustained while participating in such activities whether or not caused by negligence or other fault of EVO LIFE Pty Ltd. Including but not limited to equipment malfunction from whatever cause, or any other fault of EVO LIFE Pty Ltd. Additionally, you agree to indemnify, defend, and hold EVO LIFE Pty Ltd harmless from any third party claims arising from such activities. As set forth above under the limited warranty provisions, EVO LIFE Pty Ltd liability is limited to repair or replacement of its products which are returned to it in the specified period of time. In no event shall EVO LIFE Pty liability exceed the value of the product sold. In no event shall EVO LIFE Pty Ltd be liable for any direct, indirect, punitive, incidental, special or consequential damages whatsoever arising out of or connected with the use or misuse of any of its products. In association with the product, EVO LIFE Pty Ltd makes no warranties of any kind, either express or implied, including but not limited to warranties of merchantability, fitness for a particular purpose, of title, or of non-infringement of third party rights. This product must be inspected for use to ensure it has not been damaged in shipment. If damaged, do not use and immediately return the product to EVO LIFE Pty Ltd for a replacement. Use of the product by a user is at the user's risk.

